



SERIES 120

2" x 1-1/2" End Suction Centrifugal Pump

The Series 120 End Suction Centrifugal Pump is engineered for exceptional efficiency and long-lasting performance, making it a versatile choice for agricultural, commercial, and industrial applications. This model is close-coupled to standard NEMA JM motors and includes a specialized adaptor that safeguards the motor and enhances durability. Constructed from cast iron and equipped with a bronze impeller, the Series 120 is capable of handling a wide range of liquids thanks to its self-adjusting, corrosion-resistant mechanical seal.

Designed for reliability, the pump features a rugged build with stainless steel fasteners to reduce corrosion and extend service life. Its enclosed impellers are dynamically balanced to maximize efficiency and improve bearing longevity, ensuring consistent operation even under demanding conditions.

Additionally, the MP PumPAK® system allows quick mounting to standard NEMA C frame motors, streamlining installation and maintenance.

SPECIFICATIONS:

Suction / Discharge	2" x 1-1/2" NPT
Materials of Construction	Cast iron
Flow	Up to 200 GPM (45.4 m ³ /h)
Head Feet	Up to 135' (41 m)
Impeller	6" (152.4 mm) enclosed cast iron or bronze
Motor	Up to 7.5 HP (5.5 kW)
Seal	Special seal material combinations available (consult factory), Standard carbon / ceramic / Viton
Drive Options	Close coupled 184JM Close coupled 184TC Hydraulic motor .45 cu. in. (7.4 cm ³) Hydraulic motor .58 cu. in. (9.5 cm ³) Hydraulic motor .73 cu. in. (12.0 cm ³) Pedestal PumPAK® (without motor)
Max Solid Size	.24" (6 mm)

Application:

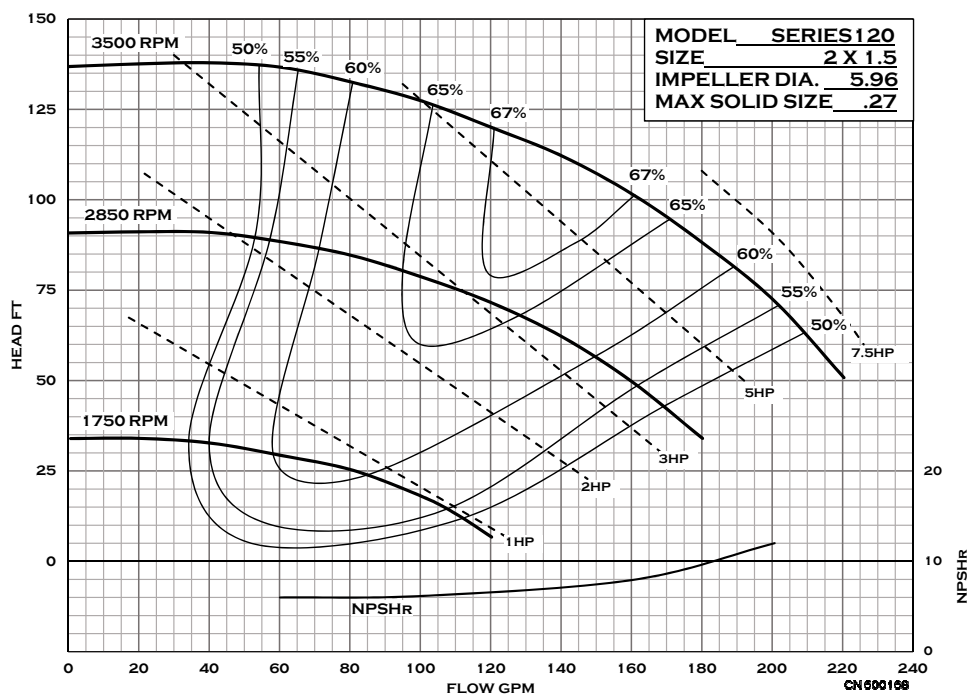
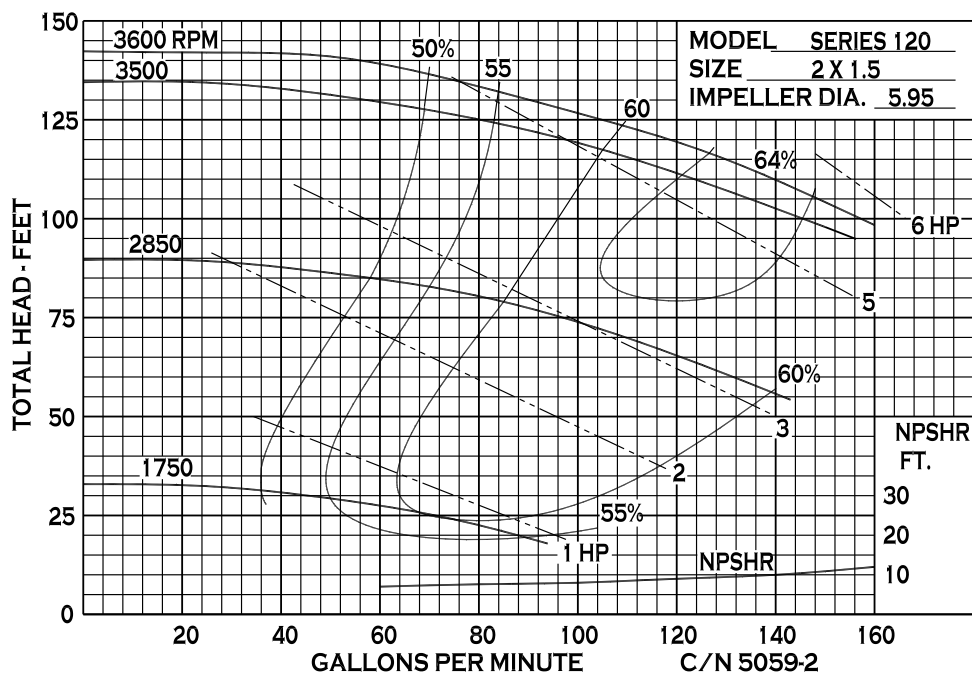
- Agricultural
- Commercial
- Industrial
- OEM



An Ingersoll Rand Business

SERIES 120

PERFORMANCE CURVES



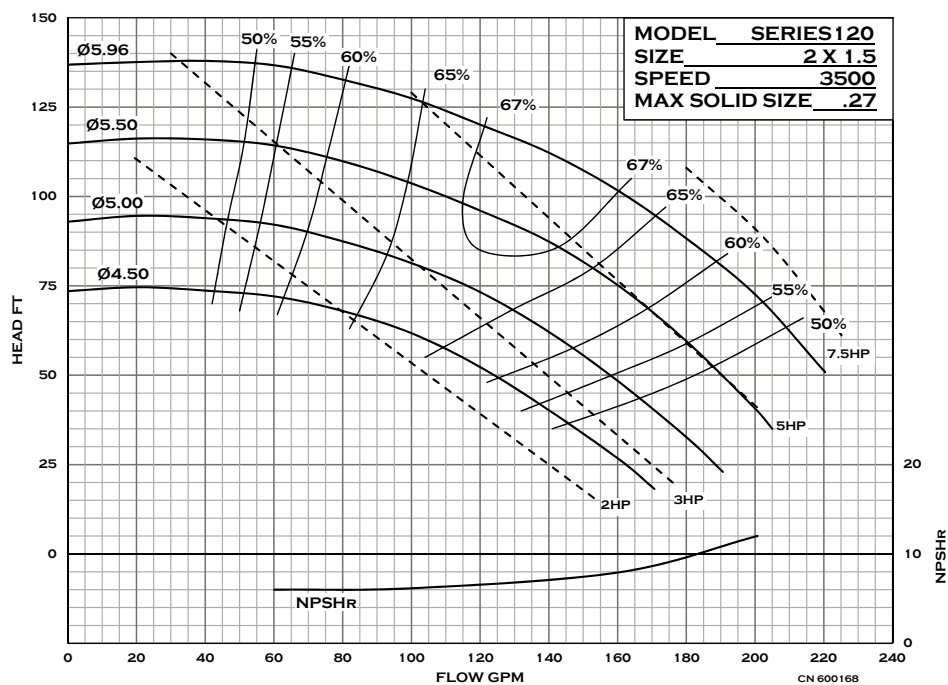
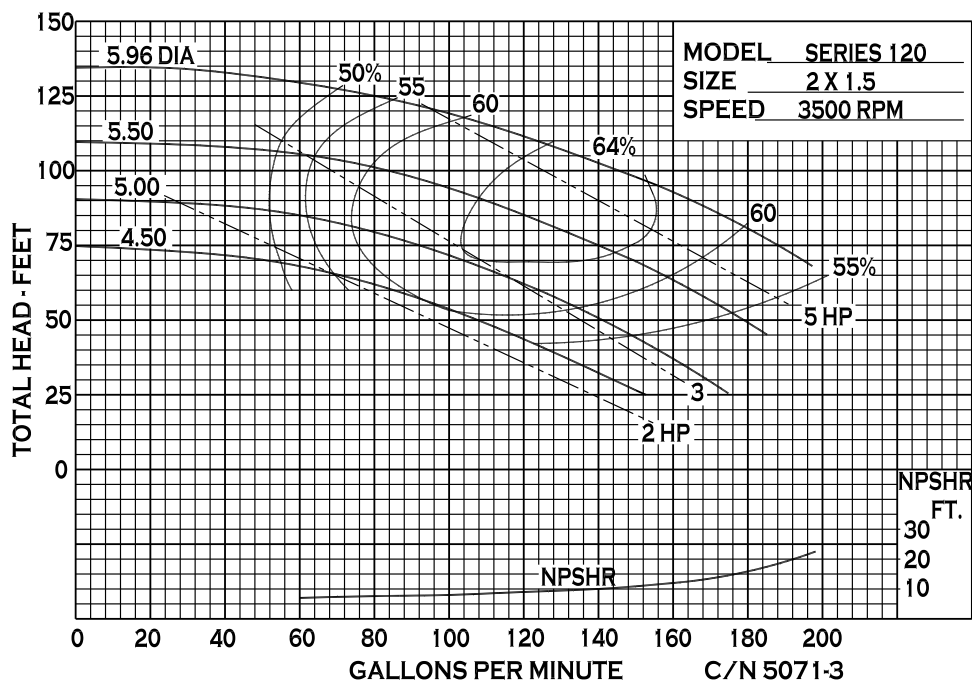
12500 South Pulaski Road
Alsip, IL 60803, USA
Phone (800) 563-8006



An Ingersoll Rand Business

SERIES 120

PERFORMANCE CURVES



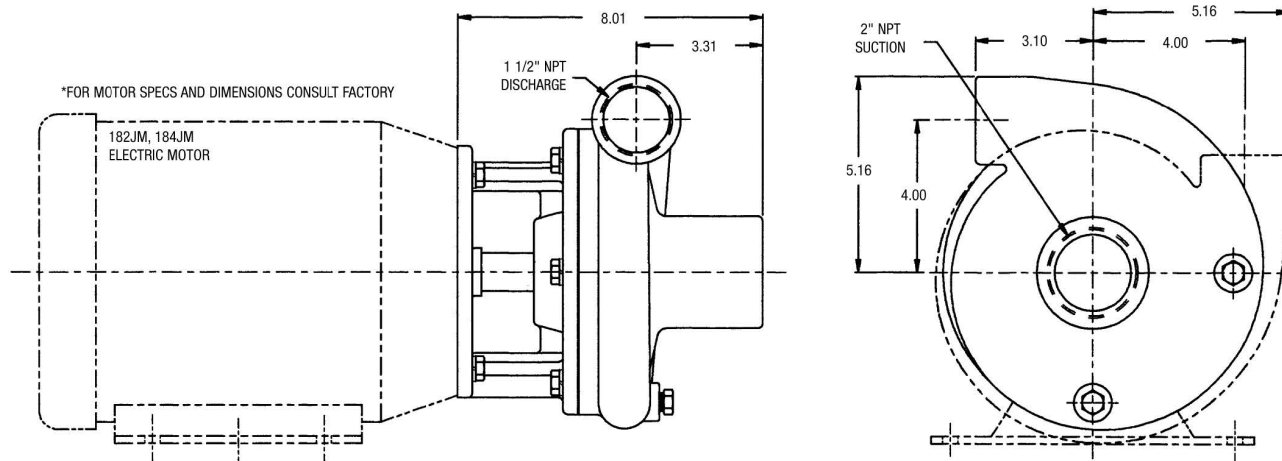
12500 South Pulaski Road
Alsip, IL 60803, USA
Phone (800) 563-8006



An Ingersoll Rand Business

SERIES 120

DIMENSIONS



* For complete parts lists and troubleshooting guidance, please refer to the MP Pumps Installation Operation & Maintenance (IOM) Manual.



12500 South Pulaski Road
Alsip, IL 60803, USA
Phone (800) 563-8006